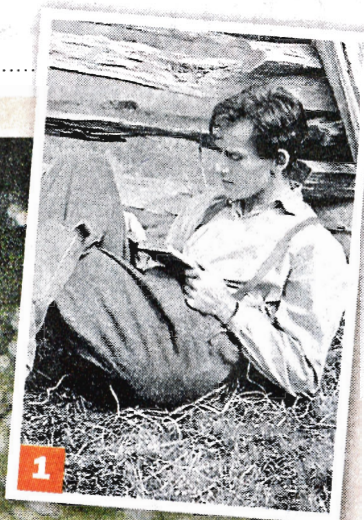


## ARTS &amp; ENTERTAINMENT

## IN THE GALLERIES

## COMING UP

**STEPHEN GIBLETT: LOW FIDELITY**

Stephen Giblett's paintings offer an interesting proposition in the context of photorealism. Using blurred, mistaken and otherwise unfocused images recorded on his mobile phone, the Melbourne artist, known for his more traditional forays into photorealism, fashions a technically fastidious rendering of an imprecise medium. Aply titled *Low Fidelity*, this striking suite of new works (above) glows with the toxicity of digital over-exposure, colour flare and distorted, pixellated, nebulous forms. A Paris street scene combusts into a wash of noxious, blown-out hues; a figure swells a ghoulish, bloody red; faces glow and stretch and morph into mutated globs of colour. The effect is entrancing. While Giblett's works seem to point towards the idea of photorealism as a broken, archaic position, they also celebrate and flaunt the very skills and sensibilities that underpin them. In the age of the throwaway digital image and the sea of backlit screens, Giblett's meticulous works offer a vivid, hyperrealist rendering of the vague, fleeting and imprecise image. The exhibition is showing alongside a fantastic new series of performance-based videos by Sue Dodd. **Tues-Fri, 10am-6pm, Sat, noon-6pm, until August 31, Anna Pappas Gallery, 2-4 Carlton Street, Prahran, 9521 7300, annapappasgallery.com**

**CRAIG EASTON: 50 VARIATIONS****FRAMING PHANTASM**

Curated by Simone Hine and featuring the works of Kevin Chin, Lucy Griggs and Aimee Fairman, *Framing Phantasm* trawls a kind of suspended space between the conscious and unconscious mind. Taking the half-remembered dream and far-off memory as its nub, this tightly curated collection of fragmentary painted scenes and outlandishly ornate, fantasy art sculptures encourages us to loosen our grip a little. Griggs' trio of petite paintings form something of a vignette, in which a man prunes a potted plant only for a premonition of a Chinese dragon to emerge from the pot. Fairman's sculptures draw upon luridly coloured crystals, twisted vines and organisms, and conch shell-like formations common to fantasy kitsch and *Lord of the Rings* knock-offs. They are fantasy, reduced to genre piece. Chin's paintings - awash with missing details, unpainted expanses and loaded symbolism - are the highlight. By isolating poignant fragments within much wider scenes he widens their potential scope. **Thurs-Sat, noon-6pm, until August 24, Beam Contemporary, level 1, 30 Guildford Lane, city, 9670 4443, beamcontemporary.com**

**BETWEEN BEING AND DOING**

*Between Being and Doing* quietly broaches notions of performance and movement associated with art practice. Indeed, for every work that punctuates this

## Selected By Jake Wilson

feverishly satirical account of a real-life kidnapping case from the 1990s, starring Mark Wahlberg as a not-too-bright personal trainer who'll stop at nothing in his pursuit of the American Dream. Longtime Bay associate Scott Rosenberg (*Con Air*) did uncredited work on the very quotable script. **Selected.**

**7 TRUE ROMANCE** (121 minutes) R A comic-book nerd (Christian Slater) and a call girl (Patricia Arquette) go on the run in this ideally trashy 1993 comedy-thriller, directed by Tony Scott from an early script by

plays the most vapid of the thieves, while Leslie Mann steals scenes as her monstrous mother. **Cinema Nova.**

**9 BEYOND THE HILLS**

(150 minutes) M After a couple of caustic portrayals of life under communism, Romanian writer-director Cristian Mungiu shows he has equal distaste for the values of organised religion. Inspired by a news story about a disastrous attempt at exorcism, this deliberately paced cautionary tale grows gimmer at each turn, without losing its mordant sense of humour.

## ARTS &amp; ENTERTAINMENT

## IN THE GALLERIES

**STEPHEN GIBLETT: LOW FIDELITY**

Stephen Giblett's paintings offer an interesting proposition in the context of photorealism. Using blurred, mistaken and otherwise unfocused images recorded on his mobile phone, the Melbourne artist, known for his more traditional forays into photorealism, fashions a technically fastidious rendering of an imprecise medium. Apty titled *Low Fidelity*, this striking suite of new works (above) glows with the toxicity of digital over-exposure, colour flare and distorted, pixelated, nebulous forms. A Paris street scene combusts into a wash of noxious, blown-out hues; a figure swells a ghoulish, bloody red; faces glow and stretch and morph into mutated globs of colour. The effect is entrancing. While Giblett's works seem to point towards the idea of photorealism as a broken, archaic position, they also celebrate and flaunt the very skills and sensibilities that underpin them. In the age of the throwaway digital image and the sea of backlit screens, Giblett's meticulous works offer a vivid, hyperrealist rendering of the vague, fleeting and imprecise image. The exhibition is showing alongside a fantastic new series of performance-based videos by Sue Dodd. **Tues-Fri, 10am-6pm, Sat, noon-6pm, until August 31, Anna Pappas Gallery, 2-4 Carlton Street, Prahran, 9521 7300, annapappasgallery.com**

**CRAIG EASTON: 50 VARIATIONS**

Craig Easton's new collection of works is at once minimalist and sprawling, and draws its potency from accumulation. A vast collection of small two-dimensional wall works, sculptural objects and a video and sound work capturing the subtle, nonetheless piercing oscillations of a guitar feedback loop, the show operates as a full-gallery installation. Taken in isolation, the wall works resemble simple constructed forms and gestures - constructed from board, Perspex, paint, scratches and screws - but viewed as a whole, they begin to assume a continuous, lively visual language. Even within the bounds of minimalism and seriality, an artist's signature will still shine through. **Tues-Sat, noon-5pm, until August 24, Nellie Castan Gallery, level 1, 12 River Street, South Yarra, 9804 7366, nelliecastan-gallery.com**

**FRAMING PHANTASM**

Curated by Simone Hine and featuring the works of Kevin Chin, Lucy Griggs and Aimee Fairman, *Framing Phantasm* trawls a kind of suspended space between the conscious and unconscious mind. Taking the half-remembered dream and far-off memory as its nub, this tightly curated collection of fragmentary painted scenes and outlandishly ornate, fantasy art sculptures encourages us to loosen our grip a little. Griggs' trio of petite paintings form something of a vignette, in which a man prunes a potted plant only for a premonition of a Chinese dragon to emerge from the pot. Fairman's sculptures draw upon luridly coloured crystals, twisted vines and organisms, and conch shell-like formations common to fantasy kitsch and *Lord of the Rings* knock-offs. They are fantasy, reduced to genre piece. Chin's paintings - awash with missing details, unpainted expanses and loaded symbolism - are the highlight. By isolating poignant fragments within much wider scenes he widens their potential scope. **Thurs-Sat, noon-6pm, until August 24, Beam Contemporary, level 1, 30 Guildford Lane, city, 9670 4443, beamcontemporary.com**

**BETWEEN BEING AND DOING**

*Between Being and Doing* quietly broaches notions of performance and movement associated with art practice. Indeed, for every work that punctuates this minimalist group exhibition - curated by Brooke Babington and Utopian Slumps director Melissa Loughnan - there is the suggestion, potential or at least memory of an action. The materials and forms that mark New Zealand artist Sriwhana Spong's fragile silver thread sculpture and crude, shard-like collages of dancing subjects echo of their own making, as do Alex Vivian's clutch of wonderfully cobbled-together objects and sculptures. Kate Newby's stunning wind chime, strung up along a span of gallery wall, is a work in constant movement and progress, while Joshua Petherick's *Carriers* - which take the form of shopping bags lined with scanned found images - are at once art objects and functional vessels. **Last day today, noon-5pm, Utopian Slumps, 33 Guildford Lane, city, 9077 9918, utopianslumps.com**

DAN RULE

## COMING UP

**FASHION**

The latest fashion from local and international designers will be on show for Melbourne Spring Fashion Week. From August 31, brands such as Ben Sherman, Levi's and Elwood join industry-leading designers Bul, Gorman, Alexi Freeman and more to present their collections for the new season. There will be runway presentations, industry talks and special fashion events. **August 31-September 8, various times, venues and prices, 9658 9658, thatsmelbourne.com.au**

**WALK**

Dick Smith Walk With Me is a national walk for disability, raising awareness of issues and celebrating the achievements of people with a disability. The recreational walk also raises funds for Scope, a national disability support and advocacy organisation. The 2km and 4km walks take place in Melbourne, Bendigo, Geelong and Ballarat in September. **September 1-15, various times, venues and prices, walkwithme.org.au**

**VERDI**

Iconic 19th-century composer Giuseppe Fortunino Francesco Verdi was born almost 200 years ago in rural northern Italy. Melbourne Opera marks the lead-up to his birthday in October with a series of performances of *La Traviata*, one of his most widely performed operas. Sung in English, the performances will feature Roy Best and soprano Antoinette Halloran. **September 11-20, Athenaeum Theatre, 188 Collins Street, city, \$25-\$98, 132 849, ticketek.com.au**

**DISNEY**

Relive Disney's *Fantasia* as the Melbourne Symphony Orchestra performs alongside a high-definition screening of sections from the classic films. Conducted by Benjamin Northey, the orchestra will perform songs such as *The Sorcerer's Apprentice* and Gershwin's *Rhapsody in Blue*, accompanied by the memorable Disney animations that featured in both the original *Fantasia* as well as *Fantasia 2000*. **October 5 (7pm) and 6 (2pm), Hamer Hall, Arts Centre Melbourne, 100 St Kilda Road, city, \$59-\$139, 1300 182 183, artscentremelbourne.com.au**